

هيئة التقييس لدول مجلس التعاون لدول الخليج العربية
STANDARDIZATION ORGANIZATION FOR G.C.C (GSO)



GSO 1694 / 2005

القواعد العامة لصحة الغذاء
**GENERAL PRINCIPLES OF
FOOD HYGIENE**

ICS: 67.020

GENERAL PRINCIPLES OF FOOD HYGIENE

Date of GSO Board of Directors' Approval : 23 / 4 / 1426 / H ,31 / 5 / 2005
Issuing Status : Standard

Foreword

Standardization Organization for GCC (GSO) is a regional Organization which consists of the National Standards Bodies of GCC member States. One of GSO main functions is to issue Gulf Standards /Technical regulation through specialized technical committees (TCs).

GSO through the technical program of committee TC No 5 " The Gulf Technical Committee for Food and Agricultural Standards Products" has prepared this Standard . The Draft Standard has been prepared by (The Kingdom of Saudi Arabia)

The draft Standard has been prepared based on relevant ADMO, International and National foreign Standards and references.

This standard has been approved as Gulf (Standard) by GSO Board of Directors in its meeting No 3 held on 23 / 4 / 1426 H , 31 / 5 /2005 G

GENERAL PRINCIPLES OF FOOD HYGIENE

1. SCOPE AND FIELD OF APPLICATION

This standard follows the food chain from primary production to the final consumer, setting out the necessary hygiene conditions for producing food which is safe and suitable for consumption. The standard provide a base line structure for other more specific, code applicable to particular sector. Such specific code and guidelines should be read in conjunction with this standard and Hazard Analysis and Critical Control (HACCP) System and Guidelines for its application (Annex).

2- COMPLEMENTARY REFERENCES

- 2.1 GSO 149/2000 “Unbottled Drinking Water”.
- 2.2 GSO 9/1995 “Labelling of Prepackaged Food”.

3- DEFINITIONS

- 3.1 Cleaning - the removal of soil, food residue, dirt, grease or other objectionable matter.
- 3.2 Contaminant - any biological or chemical agent, foreign matter, or other substances not intentionally added to food which may compromise food safety or suitability.
- 3.3 Contamination - the introduction or occurrence of a contaminant in food or food environment.
- 3.4 Disinfection - the reduction, by means of chemical agents and/or physical methods, of the number of micro-organisms in the environment, to a level that does not compromise food safety or suitability.
- 3.5 Establishment - any building or area in which food is handled and the surroundings under the control of the same management.
- 3.6 Food hygiene - all conditions and measures necessary to ensure the safety and suitability of food at all stages of the food chain.
- 3.7 Hazard - a biological, chemical or physical agent in, or condition of, food with the potential to cause an adverse health effect.
- 3.8 HACCP - a system which identifies, evaluates, and controls hazards which are significant for food safety.
- 3.9 Food handler - any person who directly handles packaged or unpackaged food, food equipment and utensils, or food contact surfaces and is therefore expected to comply with food hygiene requirements.
- 3.10 Food safety - assurance that food will not cause harm to the consumer when it is prepared and/or eaten according to its intended use.

- 3.11 Food suitability - assurance that food is acceptable for human consumption according to its intended use.
- 3.12 Primary production - those steps in the food chain up to and including, for example, harvesting, slaughter, milking, fishing.

4- REQUIREMENTS

4.1 Requirements of primary production

4.1.1 Environmental hygiene

Potential sources of contamination from the environment should be considered. In particular, primary food production should not be carried on in areas where the presence of potentially harmful substances would lead to an unacceptable level of such substances in food.

4.1.2 Hygienic production of food sources

The potential effects of primary production activities on the safety and suitability of food should be considered at all times. In particular, this includes identifying any specific points in such activities where a high probability of contamination may exist and taking specific measures to minimize that probability. The HACCP-based approach may assist in the taking of such measures - see *Hazard Analysis and Critical Control (HACCP) System and Guidelines for its Application* (Annex).

Producers should as far as practicable implement measures to:

- control contamination from air, soil, water, feedstuffs, fertilizers (including natural fertilizers), pesticides, veterinary drugs or any other agent used in primary production;
- control plant and animal health so that it does not pose a threat to human health through food consumption, or adversely affect the suitability of the product; and
- protect food sources from faecal and other contamination.

In particular, care should be taken to manage wastes, and store harmful substances appropriately. On-farm programmes which achieve specific food safety goals are becoming an important part of primary production and should be encouraged.

4.1.3 Handling, storage and transport

Procedures should be in place to:

- sort food and food ingredients to segregate material which is evidently unfit for human consumption;
- dispose of any rejected material in a hygienic manner; and
- protect food and food ingredients from contamination by pests, or by chemical, physical or microbiological contaminants or other objectionable substances during handling, storage and transport.

Care should be taken to prevent, so far as reasonably practicable, deterioration and spoilage through appropriate measures which may include controlling temperature, humidity, and/or other controls.

4.1.4 Cleaning, maintenance and personnel hygiene at primary production

Appropriate facilities and procedures should be in place to ensure that:

- any necessary cleaning and maintenance is carried out effectively; and
- an appropriate degree of personal hygiene is maintained.

4.2 Requirements of establishment: design and facilities

4.2.1 Location

4.2.1.1 Establishments

Potential sources of contamination need to be considered when deciding where to locate food establishments, as well as the effectiveness of any reasonable measures that might be taken to protect food. Establishments should not be located anywhere where, after considering such protective measures, it is clear that there will remain a threat to food safety or suitability. In particular, establishments should normally be located away from:

- environmentally polluted areas and industrial activities which pose a serious threat of contaminating food;
- areas subject to flooding unless sufficient safeguards are provided;
- areas prone to infestations of pests;
- areas where wastes, either solid or liquid, cannot be removed effectively.

4.2.1.2 Equipment

Equipment should be located so that it:

- permits adequate maintenance and cleaning;
- functions in accordance with its intended use; and
- facilitates good hygiene practices, including monitoring.

4.2.2 Premises and rooms

4.2.2.1 Design and layout

Where appropriate, the internal design and layout of food establishments should permit good food hygiene practices, including protection against cross-contamination between and during operations by foodstuffs.

4.2.2.2 Internal structures and fittings

Structures within food establishments should be soundly built of durable materials and be easy to maintain, clean and where appropriate, able to be disinfected. In particular the following specific conditions should be satisfied where necessary to protect the safety and suitability of food:

- the surfaces of walls, partitions and floors should be made of impervious materials with no toxic effect in intended use;

- walls and partitions should have a smooth surface up to a height appropriate to the operation;
- floors should be constructed to allow adequate drainage and cleaning;
- ceilings and overhead fixtures should be constructed and finished to minimize the build up of dirt and condensation, and the shedding of particles;
- windows should be easy to clean, be constructed to minimize the build up of dirt and where necessary, be fitted with removable and cleanable insect-proof screens. Where necessary, windows should be fixed;
- doors should have smooth, non-absorbent surfaces, and be easy to clean and, where necessary, disinfect;
- working surfaces that come into direct contact with food should be in sound condition, durable and easy to clean, maintain and disinfect. They should be made of smooth, non-absorbent materials, and inert to the food, to detergents and disinfectants under normal operating conditions.

4.2.2.3 Temporary/mobile premises and vending machines

Premises and structures covered here include market stalls, mobile sales and street vending vehicles, temporary premises in which food is handled such as tents and marquees.

Such premises and structures should be sited, designed and constructed to avoid, as far as reasonably practicable, contaminating food and harbouring pests.

In applying these specific conditions and requirements, any food hygiene hazards associated with such facilities should be adequately controlled to ensure the safety and suitability of food.

4.2.3 Equipment

4.2.3.1 General

Equipment and containers (other than once-only use containers and packaging) coming into contact with food, should be designed and constructed to ensure that, where necessary, they can be adequately cleaned, disinfected and maintained to avoid the contamination of food. Equipment and containers should be made of materials with no toxic effect in intended use. Where necessary, equipment should be durable and movable or capable of being disassembled to allow for maintenance, cleaning, disinfection, monitoring and, for example, to facilitate inspection for pests

4.2.3.2 Food control and monitoring equipment

In addition to the general requirements in item 4.2.3.1, equipment used to cook, heat treat, cool, store or freeze food should be designed to achieve the required food temperatures as rapidly as necessary in the interests of food safety and suitability, and maintain them effectively. Such equipment should also be designed to allow temperatures to be monitored and controlled. Where necessary, such equipment should have effective means of controlling and monitoring humidity, air-flow and any other characteristic likely to have a detrimental effect

on the safety or suitability of food. These requirements are intended to ensure that:

- harmful or undesirable micro-organisms or their toxins are eliminated or reduced to safe levels or their survival and growth are effectively controlled;
- where appropriate, critical limits established in HACCP-based plans can be monitored; and
- temperatures and other conditions necessary to food safety and suitability can be rapidly achieved and maintained.

4.2.3.3 Containers for waste and inedible substances

Containers for waste, by-products and inedible or dangerous substances, should be specifically identifiable, suitably constructed and, where appropriate, made of impervious material. Containers used to hold dangerous substances should be identified and, where appropriate, be lockable to prevent malicious or accidental contamination of food.

4.2.4 Facilities

4.2.4.1 Water supply

An adequate supply of potable water with appropriate facilities for its storage, distribution and temperature control, should be available whenever necessary to ensure the safety and suitability of food.

Potable water should be as specified in GSO standard item 2.1. Non-potable water (for use in, for example, fire control, steam production, refrigeration and other similar purposes where it would not contaminate food), shall have a separate system. Non-potable water systems shall be identified and shall not connect with, or allow reflux into, potable water systems.

4.2.4.2 Drainage and waste disposal

Adequate drainage and waste disposal systems and facilities should be provided. They should be designed and constructed so that the risk of contaminating food or the potable water supply is avoided.

4.2.4.3 Cleaning

Adequate facilities, suitably designated, should be provided for cleaning food, utensils and equipment. Such facilities should have an adequate supply of hot and cold potable water where appropriate.

4.2.4.4 Personnel hygiene facilities and toilets

Personnel hygiene facilities should be available to ensure that an appropriate degree of personal hygiene can be maintained and to avoid contaminating food. Where appropriate, facilities should include:

- adequate means of hygienically washing and drying hands, including wash basins and a supply of hot and cold (or suitably temperature controlled) water;
- lavatories of appropriate hygienic design; and
- adequate changing facilities for personnel.

Such facilities should be suitably located and designated.

4.2.4.5 Temperature control

Depending on the nature of the food operations undertaken, adequate facilities should be available for heating, cooling, cooking, refrigerating and freezing food, for storing refrigerated or frozen foods, monitoring food temperatures, and when necessary, controlling ambient temperatures to ensure the safety and suitability of food.

4.2.4.6 Air quality and ventilation

Adequate means of natural or mechanical ventilation should be provided, in particular to:

- minimize air-borne contamination of food, for example, from aerosols and condensation droplets;
- control ambient temperatures;
- control odours which might affect the suitability of food; and
- control humidity, where necessary, to ensure the safety and suitability of food.

Ventilation systems should be designed and constructed so that air does not flow from contaminated areas to clean areas and, where necessary, they can be adequately maintained and cleaned.

4.2.4.7 Lighting

Adequate natural or artificial lighting should be provided to enable the undertaking to operate in a hygienic manner. Where necessary, lighting should not be such that the resulting colour is misleading. The intensity should be adequate to the nature of the operation. Lighting fixtures should, where appropriate, be protected to ensure that food is not contaminated by breakages.

4.2.4.8 Storage

Where necessary, adequate facilities for the storage of food, ingredients and non-food chemicals (e.g. cleaning materials, lubricants, fuels) should be provided.

- Where appropriate, food storage facilities should be designed and constructed to:
- permit adequate maintenance and cleaning;
- avoid pest access and harbourage;
- enable food to be effectively protected from contamination during storage; and
- where necessary, provide an environment which minimizes the deterioration of food (e.g. by temperature and humidity control).

The type of storage facilities required will depend on the nature of the food. Where necessary, separate, secure storage facilities for cleaning materials and hazardous substances should be provided.

4.3 Control of operation requirements

4.3.1 Control of food hazards

Food business operators should control food hazards through the use of systems such as HACCP. They should:

- identify any steps in their operations which are critical to the safety of food;
- implement effective control procedures at those steps;
- monitor control procedures to ensure their continuing effectiveness; and
- review control procedures periodically, and whenever the operations change.

These systems should be applied throughout the food chain to control food hygiene throughout the shelf-life of the product through proper product and process design.

Control procedures may be simple, such as checking stock rotation calibrating equipment, or correctly loading refrigerated display units. In some cases a system based on expert advice, and involving documentation, may be appropriate. A model of such a food safety system is described in *Hazard Analysis and Critical Control (HACCP) System and Guidelines for its Application* (Annex).

4.3.2 Key aspects of hygiene control systems

4.3.2.1 Time and temperature control

Inadequate food temperature control is one of the most common causes of food borne illness or food spoilage. Such controls include time and temperature of cooking, cooling, processing and storage. Systems should be in place to ensure that temperature is controlled effectively where it is critical to the safety and suitability of food.

Temperature control systems should take into account:

- the nature of the food, e.g. its water activity, pH, and likely initial level and types of micro-organisms;
- the intended shelf-life of the product;
- the method of packaging and processing; and
- how the product is intended to be used, e.g. further cooking/processing or ready-to-eat.

Such systems should also specify tolerable limits for time and temperature variations.

Temperature recording devices should be checked at regular intervals and tested for accuracy.

4.3.2.2 Specific process steps

Other steps which contribute to food hygiene may include, for example:

- chilling
- thermal processing

- irradiation
- drying
- chemical preservation
- vacuum or modified atmospheric packaging

4.3.2.3 Microbiological and other specifications

Management systems described in item 4.3.1 offer an effective way of ensuring the safety and suitability of food. Where microbiological, chemical or physical specifications are used in any food control system, such specifications should be based on sound scientific principles and state, where appropriate, monitoring procedures, analytical methods and action limits.

4.3.2.4 Microbiological cross-contamination

Pathogens can be transferred from one food to another, either by direct contact or by food handlers, contact surfaces or the air. Raw, unprocessed food should be effectively separated, either physically or by time, from ready-to-eat foods, with effective intermediate cleaning and where appropriate disinfection.

Access to processing areas may need to be restricted or controlled. Where risks are particularly high, access to processing areas should be only via a changing facility. Personnel may need to be required to put on clean protective clothing including footwear and wash their hands before entering.

Surfaces, utensils, equipment, fixtures and fittings should be thoroughly cleaned and where necessary disinfected after raw food, particularly meat and poultry, has been handled or processed.

4.3.2.5 Physical and chemical contamination

Systems should be in place to prevent contamination of foods by foreign bodies such as glass or metal shreds from machinery, dust, harmful fumes and unwanted chemicals. In manufacturing and processing, suitable detection or screening devices should be used where necessary.

4.3.3 Incoming material requirements

No raw material or ingredient should be accepted by an establishment if it is known to contain parasites, undesirable micro-organisms, pesticides, veterinary drugs or toxic, decomposed or extraneous substances which would not be reduced to an acceptable level by normal sorting and/or processing. Where appropriate, specifications for raw materials should be identified and applied.

Raw materials or ingredients should, where appropriate, be inspected and sorted before processing. Where necessary, laboratory tests should be made to establish fitness for use. Only sound, suitable raw materials or ingredients should be used.

Stocks of raw materials and ingredients should be subject to effective stock rotation.

4.3.4 Packaging

Packaging design and materials should provide adequate protection for products to minimize contamination, prevent damage, and accommodate proper labelling. Packaging materials or gases where used must be non-toxic and not pose a threat

to the safety and suitability of food under the specified conditions of storage and use. Where appropriate, reusable packaging should be suitably durable, easy to clean and, where necessary, disinfect.

4.3.5 Water

4.3.5.1 In contact with food

Only potable water, should be used in food handling and processing, with the following exceptions:

- for steam production, fire control and other similar purposes not connected with food; and
- in certain food processes, e.g. chilling, and in food handling areas, provided this does not constitute a hazard to the safety and suitability of food (e.g. the use of clean sea water).

Water recirculated for reuse should be treated and maintained in such a condition that no risk to the safety and suitability of food results from its use. The treatment process should be effectively monitored. Recirculated water which has received no further treatment and water recovered from processing of food by evaporation or drying may be used, provided its use does not constitute a risk to the safety and suitability of food.

4.3.5.2 As an ingredient

Potable water should be used wherever necessary to avoid food contamination.

4.3.5.3 Ice and steam

Ice should be made from water that complies with item 4.2.4.1. Ice and steam should be produced, handled and stored to protect them from contamination.

Steam used in direct contact with food or food contact surfaces should not constitute a threat to the safety and suitability of food.

4.3.6 Management and supervision

The type of control and supervision needed will depend on the size of the business, the nature of its activities and the types of food involved. Managers and supervisors should have enough knowledge of food hygiene principles and practices to be able to judge potential risks, take appropriate preventive and corrective action, and ensure that effective monitoring and supervision takes place.

4.3.7 Documentation and records

Where necessary, appropriate records of processing, production and distribution should be kept and retained for a period that exceeds the shelf-life of the product. Documentation can enhance the credibility and effectiveness of the food safety control system.

4.3.8 Recall procedures

Managers should ensure effective procedures are in place to deal with any food safety hazard and to enable the complete, rapid recall of any implicated lot of the finished food from the market. Where a product has been withdrawn because of an immediate health hazard, other products which are produced under similar

conditions, and which may present a similar hazard to public health, should be evaluated for safety and may need to be withdrawn. The need for public warnings should be considered.

Recalled products should be held under supervision until they are destroyed, used for purposes other than human consumption, determined to be safe for human consumption, or reprocessed in a manner to ensure their safety.

4.4 Establishment: maintenance and sanitation requirements

4.4.1 Maintenance and cleaning

4.4.1.1 General

Establishments and equipment should be kept in an appropriate state of repair and condition to:

- facilitate all sanitation procedures;
- function as intended, particularly at critical steps (see paragraph 5.1);
- prevent contamination of food, e.g. from metal shards, flaking plaster, debris and chemicals.

Cleaning should remove food residues and dirt which may be a source of contamination. The necessary cleaning methods and materials will depend on the nature of the food business. Disinfection may be necessary after cleaning.

Cleaning chemicals should be handled and used carefully and in accordance with manufacturers' instructions and stored, where necessary, separated from food, in clearly identified containers to avoid the risk of contaminating food.

4.4.1.2 Cleaning procedures and methods

Cleaning can be carried out by the separate or the combined use of physical methods, such as heat, scrubbing, turbulent flow, vacuum cleaning or other methods that avoid the use of water, and chemical methods using detergents, alkalis or acids.

- Cleaning procedures will involve, where appropriate:
- removing gross debris from surfaces;
- applying a detergent solution to loosen soil and bacterial film and hold them in solution or suspension;
- rinsing with water which complies with item 4.2 to remove loosened soil and residues of detergent;
- dry cleaning or other appropriate methods for removing and collecting residues and debris; and
- where necessary, disinfection.

4.4.2 Cleaning programmes

Cleaning and disinfection programmes should ensure that all parts of the establishment are appropriately clean, and should include the cleaning of cleaning equipment.

Cleaning and disinfection programmes should be continually and effectively monitored for their suitability and effectiveness and where necessary, documented.

Where written cleaning programmes are used, they should specify:

- areas, items of equipment and utensils to be cleaned;
- responsibility for particular tasks;
- method and frequency of cleaning; and
- monitoring arrangements.

Where appropriate, programmes should be drawn up in consultation with relevant specialist expert advisors.

4.4.3 Pest control systems

4.4.3.1 General

Pests pose a major threat to the safety and suitability of food. Pest infestations can occur where there are breeding sites and a supply of food. Good hygiene practices should be employed to avoid creating an environment conducive to pests. Good sanitation, inspection of incoming materials and good monitoring can minimize the likelihood of infestation and thereby limit the need for pesticides.

4.4.3.2 Preventing access

Buildings should be kept in good repair and condition to prevent pest access and to eliminate potential breeding sites. Holes, drains and other places where pests are likely to gain access should be kept sealed. Wire mesh screens, for example on open windows, doors and ventilators, will reduce the problem of pest entry. Animals should, wherever possible, be excluded from the grounds of factories and food processing plants.

4.4.3.3 Harbourage and infestation

Potential food sources should be stored in pest-proof containers and/or stacked above the ground and away from walls. Areas both inside and outside food premises should be kept clean. Where appropriate, refuse should be stored in covered, pest-proof containers.

4.4.3.4 Monitoring and detection

Establishments and surrounding areas should be regularly examined for evidence of infestation.

4.4.3.5 Eradication

Pest infestations should be dealt with immediately and without adversely affecting food safety or suitability. Treatment with chemical, physical or biological agents should be carried out without posing a threat to the safety or suitability of food.

4.4.4 Waste management

Suitable provision must be made for the removal and storage of waste. Waste must not be allowed to accumulate in food handling, food storage, and other working areas and the adjoining environment except so far as is unavoidable for the proper functioning of the business.

Waste stores must be kept appropriately clean.

4.4.5 Monitoring effectiveness

Sanitation systems should be monitored for effectiveness, periodically verified by means such as audit pre-operational inspections or, where appropriate, microbiological sampling of environment and food contact surfaces and regularly reviewed and adapted to reflect changed circumstances.

4.5 Establishment: personal hygiene requirements

4.5.1 Health status

People known, or suspected, to be suffering from, or to be a carrier of a disease or illness likely to be transmitted through food, should not be allowed to enter any food handling area if there is a likelihood of their contaminating food. Any person so affected should immediately report illness or symptoms of illness to the management.

Medical examination of a food handler should be carried out if clinically or epidemiologically indicated.

4.5.2 Illness and injuries

Conditions which should be reported to management so that any need for medical examination and/or possible exclusion from food handling can be considered, include:

- jaundice
- diarrhea
- vomiting
- fever
- sore throat with fever
- visibly infected skin lesions (boils, cuts, etc.)
- discharges from the ear, eye or nose

4.5.3 Personal cleanliness

Food handlers should maintain a high degree of personal cleanliness and, where appropriate, wear suitable protective clothing, head covering, and footwear. Cuts and wounds, where personnel are permitted to continue working, should be covered by suitable waterproof dressings.

Personnel should always wash their hands when personal cleanliness may affect food safety, for example:

- at the start of food handling activities;
- immediately after using the toilet; and
- after handling raw food or any contaminated material, where this could result in contamination of other food items; they should avoid handling ready-to-eat food, where appropriate.

4.5.4 Personal behaviour

People engaged in food handling activities should refrain from behaviour which could result in contamination of food, for example:

- smoking;
- spitting;
- chewing or eating;
- sneezing or coughing over unprotected food.

Personal effects such as jewellery, watches, pins or other items should not be worn or brought into food handling areas if they pose a threat to the safety and suitability of food.

4.5.5 Visitors

Visitors to food manufacturing, processing or handling areas should, where appropriate, wear protective clothing and adhere to the other personal hygiene provisions in item 4.5.

4.6 Transportation

4.6.1 General

Food must be adequately protected during transport. The type of conveyances or containers required depends on the nature of the food and the conditions under which it has to be transported.

4.6.2 Requirements

Where necessary, conveyances and bulk containers should be designed and constructed so that they:

- do not contaminate foods or packaging;
- can be effectively cleaned and, where necessary, disinfected;
- permit effective separation of different foods or foods from non-food items where necessary during transport;
- provide effective protection from contamination, including dust and fumes;
- can effectively maintain the temperature, humidity, atmosphere and other conditions necessary to protect food from harmful or undesirable microbial growth and deterioration likely to render it unsuitable for consumption; and
- allow any necessary temperature, humidity and other conditions to be checked.

4.6.3 Use and maintenance

Conveyances and containers for transporting food should be kept in an appropriate state of cleanliness, repair and condition. Where the same conveyance or container is used for transporting different foods, or non-foods, effective cleaning and, where necessary, disinfection should take place between loads.

Where appropriate, particularly in bulk transport, containers and conveyances should be designated and marked for food use only and be used only for that purpose.

4.7 Product information and consumer awareness requirements

4.7.1 Lot identification

Each container of food should be permanently marked to identify the producer and the lot. GSO standard which mention in item 2.2 applies.

4.7.2 Product information

All food products should be accompanied by or bear adequate information to enable the next person in the food chain to handle, display, store and prepare and use the product safely and correctly.

4.7.3 Labelling

Prepackaged foods should be labelled with clear instructions to enable the next person in the food chain to handle, display, store and use the product safely. GSO standard which mentioned in item 2.2 applies.

4.7.4 Consumer education

Health education programmes should cover general food hygiene. Such programmes should enable consumers to understand the importance of any product information and to follow any instructions accompanying products, and make informed choices. In particular consumers should be informed of the relationship between time/temperature control and foodborne illness.

4.8 Training requirements

4.8.1 Awareness and responsibilities

Food hygiene training is fundamentally important. All personnel should be aware of their role and responsibility in protecting food from contamination or deterioration. Food handlers should have the necessary knowledge and skills to enable them to handle food hygienically. Those who handle strong cleaning chemicals or other potentially hazardous chemicals should be instructed in safe handling techniques.

4.8.2 Training programmes

Factors to taken into account in assessing the level of training required include:

- the nature of the food, in particular its ability to sustain growth of pathogenic or spoilage micro-organisms;
- the manner in which the food is handled and packed, including the probability of contamination;
- the extent and nature of processing or further preparation before final consumption;
- the conditions under which the food will be stored; and
- the expected length of time before consumption.

4.8.3 Instruction and supervision

Periodic assessments of the effectiveness of training and instruction programmes should be made, as well as routine supervision and checks to ensure that procedures are being carried out effectively.

Managers and supervisors of food processes should have the necessary knowledge of food hygiene principles and practices to be able to judge potential risks and take the necessary action to remedy deficiencies.

4.8.4 Refreshing training

Training programmes should be routinely reviewed and updated where necessary. Systems should be in place to ensure that food handlers remain aware of all procedures necessary to maintain the safety and suitability of food.

**HAZARD ANALYSIS AND CRITICAL CONTROL POINT
(HACCP) SYSTEM AND GUIDELINES FOR ITS
APPLICATION**

Annex

PREAMBLE

The first section of this document sets out the principles of the Hazard Analysis and Critical Control Point (HACCP) system. The second section provides general guidance for the application of the system while recognizing that the details of application may vary depending on the circumstances of the food operation.¹

The HACCP system, which is science based and systematic, identifies specific hazards and measures for their control to ensure the safety of food. HACCP is a tool to assess hazards and establish control systems that focus on prevention rather than relying mainly on end-product testing. Any HACCP system is capable of accommodating change, such as advances in equipment design, processing procedures or technological developments.

HACCP can be applied throughout the food chain from primary production to final consumption and its implementation should be guided by scientific evidence of risks to human health. As well as enhancing food safety, implementation of HACCP can provide other significant benefits. In addition, the application of HACCP systems can aid inspection by regulatory authorities and promote international trade by increasing confidence in food safety.

The successful application of HACCP requires the full commitment and involvement of management and the work force. It also requires a multidisciplinary approach; this multidisciplinary approach should include, when appropriate, expertise in agronomy, veterinary health, production, microbiology, medicine, public health, food technology, environmental health, chemistry and engineering, according to the particular study. The application of HACCP is compatible with the implementation of quality management systems, such as the ISO 9000 series, and is the system of choice in the management of food safety within such systems.

While the application of HACCP to food safety was considered here, the concept can be applied to other aspects of food quality.

¹ The Principles of the HACCP System set the basis for the requirements for the application of HACCP, while the Guidelines for the application provide general guidance for practical application.

DEFINITIONS

Control (verb): To take all necessary actions to ensure and maintain compliance with criteria established in the HACCP plan.

Control (noun): The state wherein correct procedures are being followed and criteria are being met.

Control measure: Any action and activity that can be used to prevent or eliminate a food safety hazard or reduced it to an acceptable level.

Corrective action: Any action to be taken when the results of monitoring at the CCP indicate a loss of control.

Critical Control Point (CCP): A step at which control can be applied and is essential to prevent or eliminate a food safety hazard or reduce it to an acceptable level.

Critical limit: A criterion which separates acceptability from unacceptability.

Deviation: Failure to meet a critical limit.

Flow diagram: A systematic representation of the sequence of steps or operations used in the production or manufacture of a particular food item.

HACCP: A system which identifies, evaluates, and controls hazards which are significant for food safety.

HACCP plan: A document prepared in accordance with the principles of HACCP to ensure control of hazards which are significant for food safety in the segment of the food chain under consideration.

Hazard: A biological, chemical or physical agent in, or condition of, food with the potential to cause an adverse health effect.

Hazard analysis: The process of collecting and evaluating information on hazards and conditions leading to their presence to decide which are significant for food safety and therefore should be addressed in the HACCP plan.

Monitor: The act of conducting a planned sequence of observations or measurements of control parameters to assess whether a CCP is under control.

Step: A point, procedure, operation or stage in the food chain including raw materials, from primary production to final consumption.

Validation: Obtaining evidence that the elements of the HACCP plan are effective.

Verification: The application of methods, procedures, tests and other evaluations, in addition to monitoring to determine compliance with the HACCP plan.

PRINCIPLES OF THE HACCP SYSTEM

The HACCP system consists of the following seven principles:

PRINCIPLE 1

Conduct a hazard analysis.

PRINCIPLE 2

Determine the Critical Control Points (CCPs).

PRINCIPLE 3

Establish critical limit(s).

PRINCIPLE 4

Establish a system to monitor control of the CCP.

PRINCIPLE 5

Establish the corrective action to be taken when monitoring indicates that a particular CCP is not under control.

PRINCIPLE 6

Establish procedures for verification to confirm that the HACCP system is working effectively.

PRINCIPLE 7

Establish documentation concerning all procedures and records appropriate to these principles and their application.

GUIDELINES FOR THE APPLICATION OF THE HACCP SYSTEM

Prior to application of HACCP to any sector of the food chain, that sector should be operating according to the appropriate GSO standards of General Principles of Food Hygiene and food safety. Management commitment is necessary for implementation of an effective HACCP system. During hazard identification, evaluation, and subsequent operations in designing and applying HACCP systems, consideration must be given to the impact of raw materials, ingredients, food manufacturing practices, role of manufacturing processes to control hazards, likely end-use of the product, categories of consumers of concern, and epidemiological evidence relative to food safety.

The intent of the HACCP system is to focus control at CCPs. Redesign of the operation should be considered if a hazard which must be controlled is identified but no CCPs are found.

HACCP should be applied to each specific operation separately. CCPs identified in any given example in any Codex Code of Hygienic Practice might not be the only ones identified for a specific application or might be of a different nature.

The HACCP application should be reviewed and necessary changes made when any modification is made in the product, process, or any step.

It is important when applying HACCP to be flexible where appropriate, given the context of the application taking into account the nature and the size of the operation.

APPLICATION

The application of HACCP principles consists of the following tasks as identified in the Logic Sequence for Application of HACCP (Diagram 1).

1. Assemble HACCP team

The food operation should assure that the appropriate product specific knowledge and expertise is available for the development of an effective HACCP plan. Optimally, this may be accomplished by assembling a multidisciplinary team. Where such expertise is not available on site, expert advice should be obtained from other sources. The scope of the HACCP plan should be identified. The scope should describe which segment of the food chain is involved and the general classes of hazards to be addressed (e.g. does it cover all classes of hazards or only selected classes).

2. Describe product

A full description of the product should be drawn up, including relevant safety information such as: composition, physical/chemical structure (including A_w , pH, etc.), microcidal/static treatments (heat-treatment, freezing, brining, smoking, etc.), packaging, durability and storage conditions and method of distribution.

3. Identify intended use

The intended use should be based on the expected uses of the product by the end user or consumer. In specific cases, vulnerable groups of the population, e.g. institutional feeding, may have to be considered.

4. Construct flow diagram

The flow diagram should be constructed by the HACCP team. The flow diagram should cover all steps in the operation. When applying HACCP to a given operation, consideration should be given to steps preceding and following the specified operation.

5. On-site confirmation of flow diagram

The HACCP team should confirm the processing operation against the flow diagram during all stages and hours of operation and amend the flow diagram where appropriate.

6. List all potential hazards associated with each step, conduct a hazard analysis, and consider any measures to control identified hazards

(see PRINCIPLE 1)

The HACCP team should list all of the hazards that may be reasonably expected to occur at each step from primary production, processing, manufacture, and distribution until the point of consumption.

The HACCP team should next conduct a hazard analysis to identify for the HACCP plan which hazards are of such a nature that their elimination or reduction to acceptable levels is essential to the production of a safe food.

In conducting the hazard analysis, wherever possible the following should be included:

- the likely occurrence of hazards and severity of their adverse health effects;
- the qualitative and/or quantitative evaluation of the presence of hazards;
- survival or multiplication of micro-organisms of concern;
- production or persistence in foods of toxins, chemicals or physical agents; and
- conditions leading to the above.

The HACCP team must then consider what control measures, if any, exist which can be applied for each hazard.

More than one control measure may be required to control a specific hazard(s) and more than one hazard may be controlled by a specified control measure.

7. Determine Critical Control Points

(see PRINCIPLE 2)²

There may be more than one CCP at which control is applied to address the same hazard. The determination of a CCP in the HACCP system can be facilitated by the application of a decision tree (e.g. Diagram 2), which indicates a logic reasoning approach. Application of a decision tree should be flexible, given whether the operation is for production, slaughter, processing, storage, distribution or other. It should be used for guidance when determining CCPs. This example of a decision tree may not be applicable to all situations. Other approaches may be used. Training in the application of the decision tree is recommended.

If a hazard has been identified at a step where control is necessary for safety, and no control measure exists at that step, or any other, then the product or process should be modified at that step, or at any earlier or later stage, to include a control measure.

8. Establish critical limits for each CCP

(see PRINCIPLE 3)

Critical limits must be specified and validated if possible for each Critical Control Point. In some cases more than one critical limit will be elaborated at a particular step. Criteria often used include measurements of temperature, time, moisture level, pH, A_w , available chlorine, and sensory parameters such as visual appearance and texture.

9. Establish a monitoring system for each CCP

(see PRINCIPLE 4)

Monitoring is the scheduled measurement or observation of a CCP relative to its critical limits. The monitoring procedures must be able to detect loss of control at the

CCP. Further, monitoring should ideally provide this information in time to make adjustments to ensure control of the process to prevent violating the critical limits. Where possible, process adjustments should be made when monitoring results indicate a trend towards loss of control at a CCP. The adjustments should be taken before a deviation occurs. Data derived from monitoring must be evaluated by a designated person with knowledge and authority to carry out corrective actions when indicated. If monitoring is not continuous, then the amount or frequency of monitoring must be sufficient to guarantee the CCP is in control. Most monitoring procedures for CCPs will need to be done rapidly because they relate to on-line processes and there will not be time for lengthy analytical testing. Physical and chemical measurements are often preferred to microbiological testing because they may be done rapidly and can often indicate the microbiological control of the product. All records and documents associated with monitoring CCPs must be signed by the person(s) doing the monitoring and by a responsible reviewing official(s) of the company.

10. Establish corrective actions

(see PRINCIPLE 5)

Specific corrective actions must be developed for each CCP in the HACCP system in order to deal with deviations when they occur.

The actions must ensure that the CCP has been brought under control. Actions taken must also include proper disposition of the affected product. Deviation and product disposition procedures must be documented in the HACCP record keeping.

11. Establish verification procedures

(see PRINCIPLE 6)

Establish procedures for verification. Verification and auditing methods, procedures and tests, including random sampling and analysis, can be used to determine if the HACCP system is working correctly. The frequency of verification should be sufficient to confirm that the HACCP system is working effectively. Examples of verification activities include:

- Review of the HACCP system and its records;
- Review of deviations and product dispositions;
- Confirmation that CCPs are kept under control.

Where possible, validation activities should include actions to confirm the efficacy of all elements of the HACCP plan.

12. Establish Documentation and Record Keeping

(see PRINCIPLE 7)

Efficient and accurate record keeping is essential to the application of a HACCP system. HACCP procedures should be documented. Documentation and record keeping should be appropriate to the nature and size of the operation.

Documentation examples are:

- Hazard analysis;
- CCP determination;
- Critical limit determination.

Record examples are:

- CCP monitoring activities;
- Deviations and associated corrective actions;
- Modifications to the HACCP system.

An example of a HACCP worksheet is attached as Diagram 3.

TRAINING

Training of personnel in industry, government and academia in HACCP principles and applications, and increasing awareness of consumers are essential elements for the effective implementation of HACCP. As an aid in developing specific training to support a HACCP plan, working instructions and procedures should be developed which define the tasks of the operating personnel to be stationed at each Critical Control Point.

Cooperation between primary producer, industry, trade groups, consumer organizations, and responsible authorities is of vital importance. Opportunities should be provided for the joint training of industry and control authorities to encourage and maintain a continuous dialogue and create a climate of understanding in the practical application of HACCP.

DIAGRAM 1

LOGIC SEQUENCE FOR THE APPLICATION OF HACCP

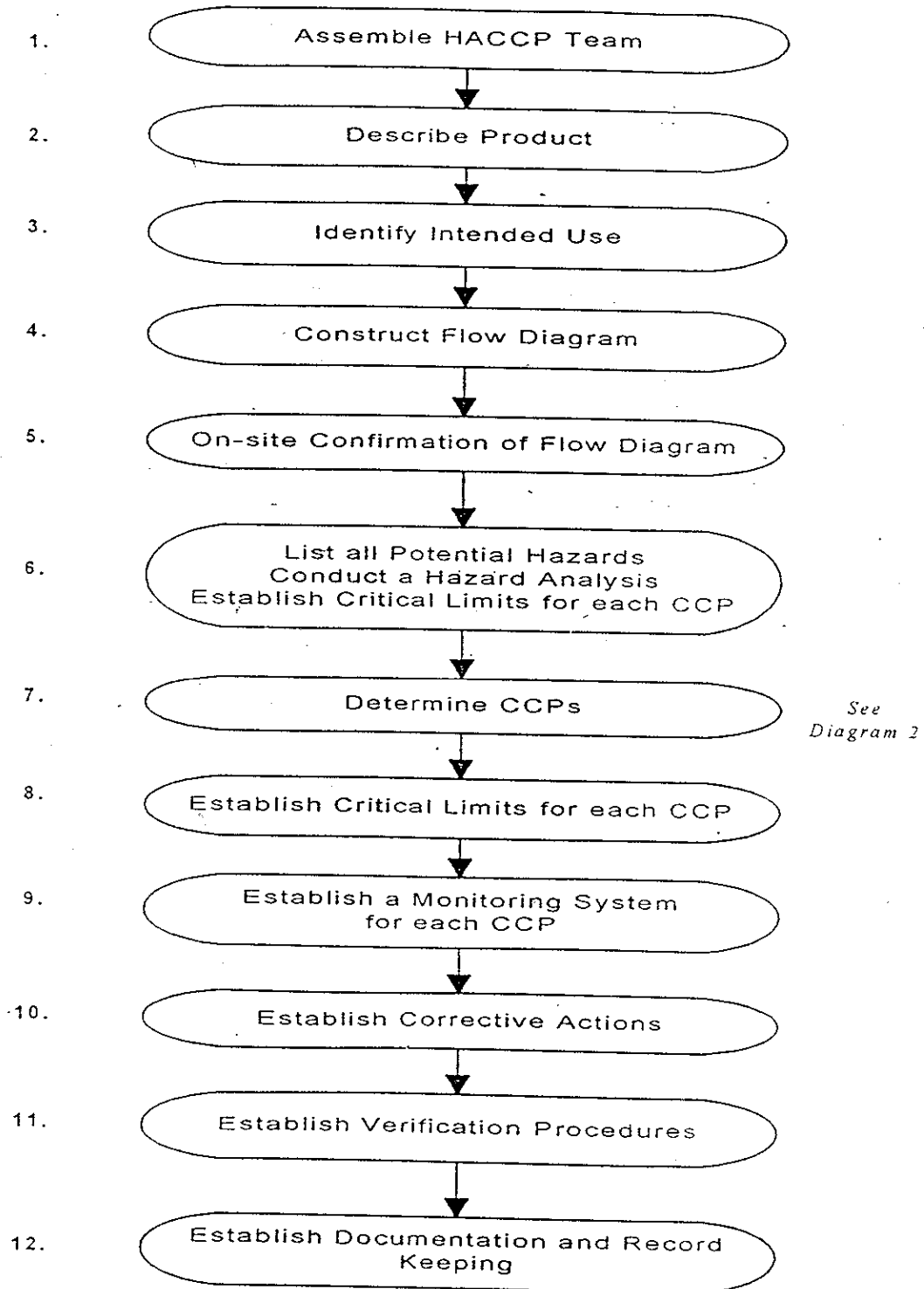
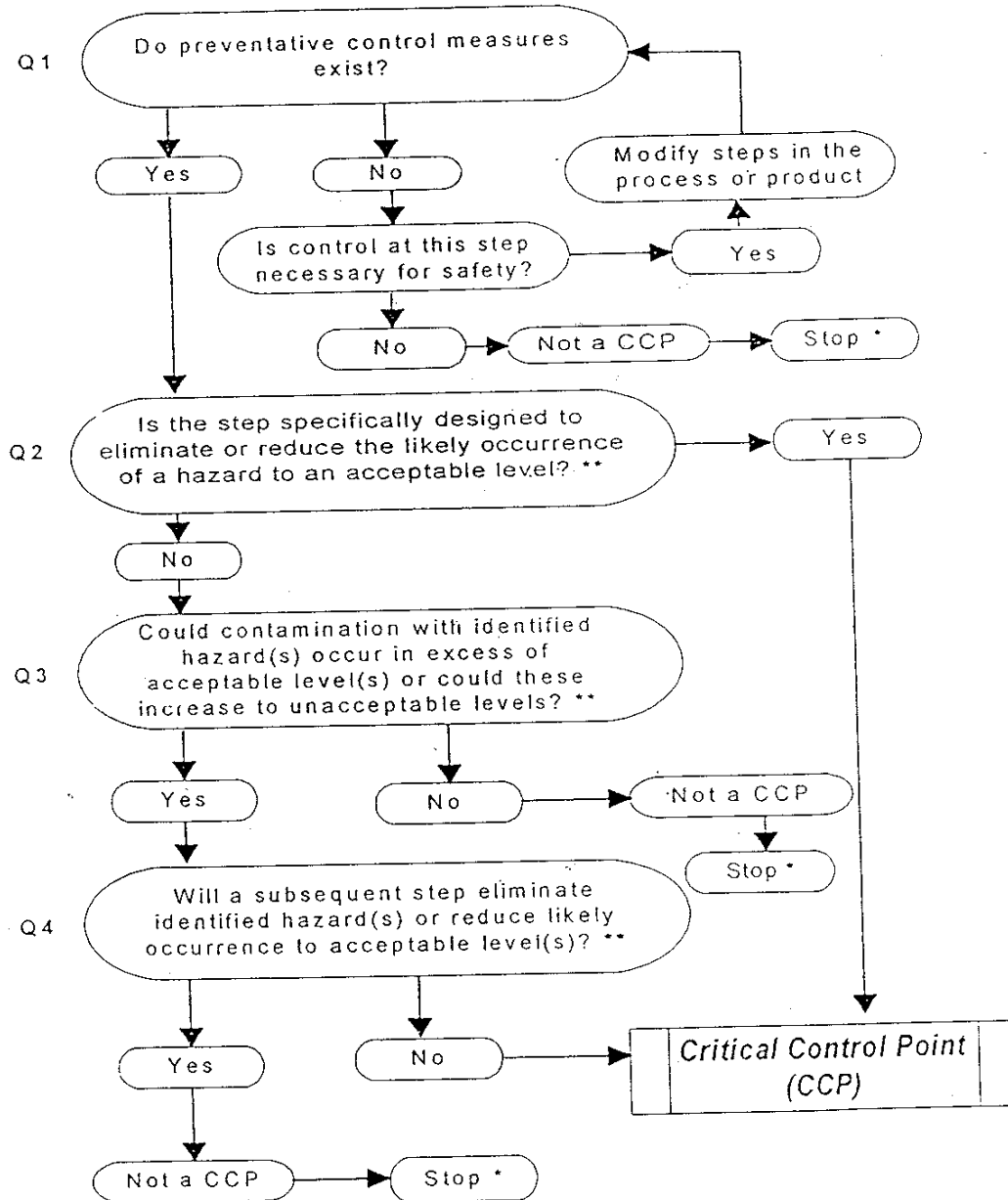


DIAGRAM 2

EXAMPLE OF DECISION TREE TO IDENTIFY CCPs

(answer questions in sequence)



* Proceed to the next identified hazard in the described process

** Acceptable and unacceptable levels need to be determined within the overall objectives in identifying the CCPs of the HACCP plans

DIAGRAM 3

EXAMPLE OF A HACCP WORKSHEET

1.

Describe Product

2.

Diagram Process Flow

3.

List							
Step	Hazard(s)	Control Measure(s)	CCPs	Critical Limits	Monitoring Procedures	Corrective Actions	Records

4.

Verification
